

# Supplement to Fisher® FIELDVUE® DVC6000 and DVC6000 SIS Series Digital Valve Controller Instruction Manuals

## 275 HART® Communicator Menu Trees for Firmware 7 Digital Valve Controllers

This instruction manual supplement contains the 275 HART® Communicator menu trees and fast-key-sequences for all DVC6000 and DVC6000 SIS Firmware 7 instrument levels. Refer to the appropriate instruction manual or quick start guide for all other information pertaining to the DVC6000 or DVC6000 SIS digital valve controller.

- Fisher® FIELDVUE® DVC6000 Series Digital Valve Controllers Quick Start Guide (D102762X012)

- Fisher® FIELDVUE® DVC6000 SIS Series Digital Valve Controllers for Safety Instrumented System (SIS) Solutions Instruction Manual (D103230X012)

### Contents

Fast Key Sequence for DVC6000 Instrument Level HC, AD, and PD .....	2
Menu Tree for DVC6000 Instrument Level HC AD, and PD .....	4
Fast Key Sequence for DVC6000 Instrument Level AC .....	6
Menu Tree for DVC6000 Instrument Level AC ..	7
Fast Key Sequence for DVC6000 Instrument Level ODV .....	8
Menu Tree for DVC6000 Instrument Level ODV .....	10
Fast Key Sequence for DVC6000 SIS Digital Valve Controller .....	12
Menu Tree for DVC6000 SIS Digital Valve Controller .....	14

- Fisher® FIELDVUE® DVC6000 SIS Series Digital Valve Controllers for Safety Instrumented System (SIS) Solutions Quick Start Guide (D103307X012)

These documents are available from your Emerson Process Management sales office. Also visit our website at [www.FIELDVUE.com](http://www.FIELDVUE.com)

### Note

**Neither Emerson, Emerson Process Management, nor any of their affiliated entities assumes responsibility for the selection, use, or maintenance of any product. Responsibility for the selection, use, and maintenance of any product remains with the purchaser and end-user.**

### Related Documents

Other documents containing information related to the DVC6000 Series digital valve controllers include:

- Fisher® FIELDVUE® DVC6000 Series Digital Valve Controllers Instruction Manual (D102794X012)



FIELDVUE® Digital Valve Controllers

February 2009

Fast-Key Sequence for FIELDVUE® DVC6000 Instrument Level HC, AD, and PD

Function/Variable	Fast-Key Sequence	Coordinates(1)	Function/Variable	Fast-Key Sequence	Coordinates(1)
Actuator Style	1-1-2-3-3	4-A	HART Tag	1-2-3-1	3-C
	1-2-5-4	4-D	HART Universal Revision	1-3-2-1	4-I
Alert Conditions	7	1-F	Input Characteristic	1-2-6-3	4-E
Analog Input	2	1-F	Instrument Date & Time	1-2-8-1-2	4-F
Analog Input Calibration	1-4-2-3	3-I	Instrument Level	1-3-2-5	4-I
Analog Input Range High	1-2-4-2	4-C	Instrument Mode	Hot-Key-1	1-B
Analog Input Range Low	1-2-4-3	4-C		1-1-2-1	3-B
Analog Input Units	1-2-4-1	4-C		1-2-1-1	3-B
Auto Calibration in Progress Enable	1-2-8-2-2	4-G	Instrument Serial Number	1-2-3-6	3-D
Auto Travel Calibration	1-1-2-4-5	4-B	Integral Dead Zone	1-2-6-1-2-1	6-D
	1-4-1-1	3-H		1-2-8-4-4	3-G
Auxiliary Input	1-3-1-1	4-H	Integral Limit	1-2-6-1-2-2	6-D
	1-2-7-3-1-2	4-C		1-2-8-4-3	3-G
Auxiliary Terminal Alert Enable	1-2-7-3-1-1	4-C	Integrator Saturated Hi Enable	1-2-8-4-1	3-G
Auxiliary Terminal Mode	1-2-5-2	4-D	Integrator Saturated Lo Enable	1-2-8-4-2	3-G
	1-2-7-3-1-3	4-D	Lag Time	1-2-6-5-3	4-F
Burst Command	1-2-1-5-2	4-C	Last Calibration Status	1-4-1-3	3-H
Burst Enable	1-2-1-5-1	4-C	Manual Travel Calibration	1-4-1-2	3-H
Calibration in Progress Enable	1-2-8-2-1	4-G	Maximum Supply Pressure	1-1-2-3-2	4-A
Calibration Location	1-4-1-4	3-I		1-2-5-3	4-D
Clear Record	1-2-7-6-4	3-F	Message	1-2-3-2	3-C
Command 3 (Trending) Press	1-2-1-5-3	4-C	Miscellaneous Group Enable	1-2-7-6-5-3	4-G
Control Mode	Hot-Key 2	1-B	Multi-Drop Enable	1-2-8-3-2	4-G
	1-1-2-2	3-B	No Free Time	1-2-7-1-3-6	4-C
	1-2-1-2	3-C	Non-Critical NVM Enable	1-2-7-1-3-3	4-C
Critical NVM Fail	1-2-7-1-3-4	4-C	Number of Power Ups	1-3-1-9	4-H
Cycle Counter	1-3-1-5	4-H	Offline/Failed Enable	1-2-7-1-3-1	4-C
	1-2-7-5-1-2	4-E	Performance Tuner(2)	1-1-1-2	3-B
Cycle Counter Alert Enable	1-2-7-5-1-1	4-E	Polling Address	1-2-3-7	3-D
Cycle Counter Alert Point	1-2-7-5-1-3	4-E	Power Starvation Alert Enable	1-2-7-1-3-2	4-C
Cycle Counter Deadband	1-2-7-5-2-1	4-F	Pressure Control Active Enable	1-2-8-3-1	4-G
Date	1-2-3-4	3-C	Pressure Integral Enable	1-2-6-1-3-2	6-E
Descriptor	1-2-3-3	3-C	Pressure Integral Gain	1-2-6-1-3-3	6-E
Define Custom Characteristic	1-2-6-4	4-E	Pressure MLFB Gain	1-1-2-4-2-3	5-B
Device Description Revision, HART Communicator	1-3-3	3-H		1-2-6-1-3-1-3	6-E
Device Identification	1-3-2-6	4-I	Pressure, Output A	6-1	1-G
Device Revision	1-3-2-2	4-I	Pressure, Output A - Output B	6-3	1-G
Diagnostic Data Available Enable	1-2-8-2-4	4-G	Pressure, Output B	6-2	1-G
Diagnostic In Progress Enable	1-2-8-2-3	4-G	Pressure Proportional Gain	1-1-2-4-2-2	6-B
Display Record	1-2-7-6-3	3-F		1-2-6-1-3-1-2	6-E
Drive Alert Enable	1-2-7-1-2-1	4-B	Pressure Range High	1-2-6-2-4-1	6-G
Drive Current Fail	1-2-7-1-1	3-C	Pressure Range Low	1-2-6-2-4-2	6-H
Drive Signal	5	1-F	Pressure Sensors Calibration	1-4-2-1	3-I
	1-2-7-1-2-2	4-B	Pressure Sensor Fail(2)	1-2-7-2-3	3-C
Failure Group Enable	1-2-7-6-5-1	4-F	Pressure Tuning Set	1-1-2-4-2-1	6-B
Feedback Connection	1-1-2-3-4	4-A		1-2-6-1-3-1-1	6-E
	1-2-5-5	4-D	Pressure Units	1-1-2-3-1	4-A
Firmware Revision	1-3-2-3	4-I		1-2-4-4	4-C
Flash ROM Fail	1-2-7-1-3-5	4-C	Protection	Hot Key-3	1-B
Hardware Revision	1-3-2-4	4-I		1-2-2	2-D

**Italicized Fast-Key Sequence and Coordinates indicates Variable/Function is found in the Alerts menu tree on page 5.**

1. Coordinates are to help locate the item on the menu trees on pages 4 and 5.

2. Only available in instrument level AD and PD.

continued on next page

Fast-Key Sequence for FIELDVUE® DVC6000 Instrument Level HC, AD, and PD (Continued)

Function/Variable	Fast-Key Sequence	Coordinates <sup>(1)</sup>	Function/Variable	Fast-Key Sequence	Coordinates <sup>(1)</sup>
Raw Travel Input	1-3-1-7	4-H	Travel Alert HiHi Enable	1-2-7-4-5-1	5-E
Record Full Enable	1-2-7-6-2	2-F	Travel Alert LoLo Enable	1-2-7-4-5-2	5-E
Record Not Empty Enable	1-2-7-6-1	2-F	Travel Alert HiHi Point	1-2-7-4-5-3	5-E
Relay Adjust	1-4-3	2-H	Travel Alert Low Low Point	1-2-7-4-5-4	5-E
	1-1-2-4-4	4-B	Travel Deviation Alert Enable	1-2-7-4-4-1	5-D
Relay Type	1-2-5-1	4-D	Travel Deviation Alert Point	1-2-7-4-4-2	5-D
Reference Voltage Fail	1-2-7-1-3-7	4-C	Travel Deviation Time	1-2-7-4-4-3	5-D
Restart	1-2-1-4	3-C	Travel Integral Enable	1-2-6-1-1-2	6-D
Restart Control Mode	1-2-1-3	3-C	Travel Integral Gain	1-2-6-1-1-3	6-D
Restore Calibration	1-4-4	2-I	Travel Limit/Cutoff Hi Enable	1-2-7-4-7-1	5-F
Run Time	1-3-1-8	4-H	Travel Limit/Cutoff Lo Enable	1-2-7-4-7-2	5-F
Setpoint Rate Close	1-2-6-5-2	4-F	Travel Limit High	1-2-6-2-3-1	6-G
Setpoint Rate Open	1-2-6-5-1	4-F		1-2-7-4-7-5	5-F
Setup Wizard	1-1-1-1	3-A	Travel Limit Low	1-2-6-2-3-2	6-G
Stabilize/Optimize	Hot Key-4	1-B		1-2-7-4-7-6	5-F
	1-1-1-2 <sup>(3)</sup>	3-A	Travel MLFB Gain	1-1-2-4-1-4	5-B
	1-2-6-1-1-4	6-D		1-2-6-1-1-1-4	6-C
Status	8	1-F	Travel/Pressure Cutoff High	1-2-6-2-2-1	6-G
Stroke Valve	1-5	2-E		1-2-7-4-7-3	5-F
Supply <sup>(2)</sup>	1-2-7-3-2-2	4-D	Travel Pressure/Cutoff Low	1-1-2-4-3	4-B
Supply Alert Enable <sup>(2)</sup>	1-2-7-3-2-1	4-D		1-2-6-2-2-2	5-E
Supply Alert Point <sup>(2)</sup>	1-2-7-3-2-3	4-D		1-2-7-4-7-4	5-F
Supply Pressure <sup>(2)</sup>	6-4	1-G	Travel/Pressure Select	1-2-6-2-1	5-E
Temperature	1-3-1-2	4-H	Travel Proportional Gain	1-1-2-4-1-2	5-B
Temperature, Maximum Recorded	1-3-1-3	4-H		1-2-6-1-1-1-2	6-C
Temperature, Minimum Recorded	1-3-1-4	4-H	Travel Sensor Adjust	1-4-2-2	3-I
Temperature Sensor Fail	1-2-7-2-2	3-C	Travel Sensor Fail	1-2-7-2-1	3-C
Temperature Units	1-2-4-5	4-C	Travel Sensor Motion	1-1-2-3-5	4-A
Time Invalid Enable	1-2-8-1-1	4-F	Travel Sensor Motion	1-2-5-6	4-D
Travel	3	1-F	Travel Set Point	4	1-F
	1-2-7-4-1	3-D		1-2-7-4-2	3-D
Travel Accumulator	1-3-1-6	4-H	Travel Tuning Set	1-1-2-4-1-1	5-A
	1-2-7-5-3-2	4-F		1-2-6-1-1-1-1	6-C
Travel Accumulator Alert Enable	1-2-7-5-3-1	4-F	Travel Velocity Gain	1-1-2-4-1-3	5-B
Travel Accumulator Alert Point	1-2-7-5-3-3	4-F		1-2-6-1-1-1-3	6-C
Travel Accumulator Deadband	1-2-7-5-2-1	4-F	Valve Group Enable	1-2-7-6-5-2	4-G
Travel Alert Deadband	1-2-7-4-3	3-D	Valve Serial Number	1-2-3-5	3-C
Travel Alert Hi Enable	1-2-7-4-6-1	5-E	Valve Style	1-1-2-3-6	4-B
Travel Alert Lo Enable	1-2-7-4-6-2	5-E		1-2-5-7	4-D
Travel Alert High Point	1-2-7-4-6-3	5-E	Zero Power Condition	1-1-2-3-7	4-B
Travel Alert Lo Point	1-2-7-4-6-4	5-F		1-2-5-8	4-D

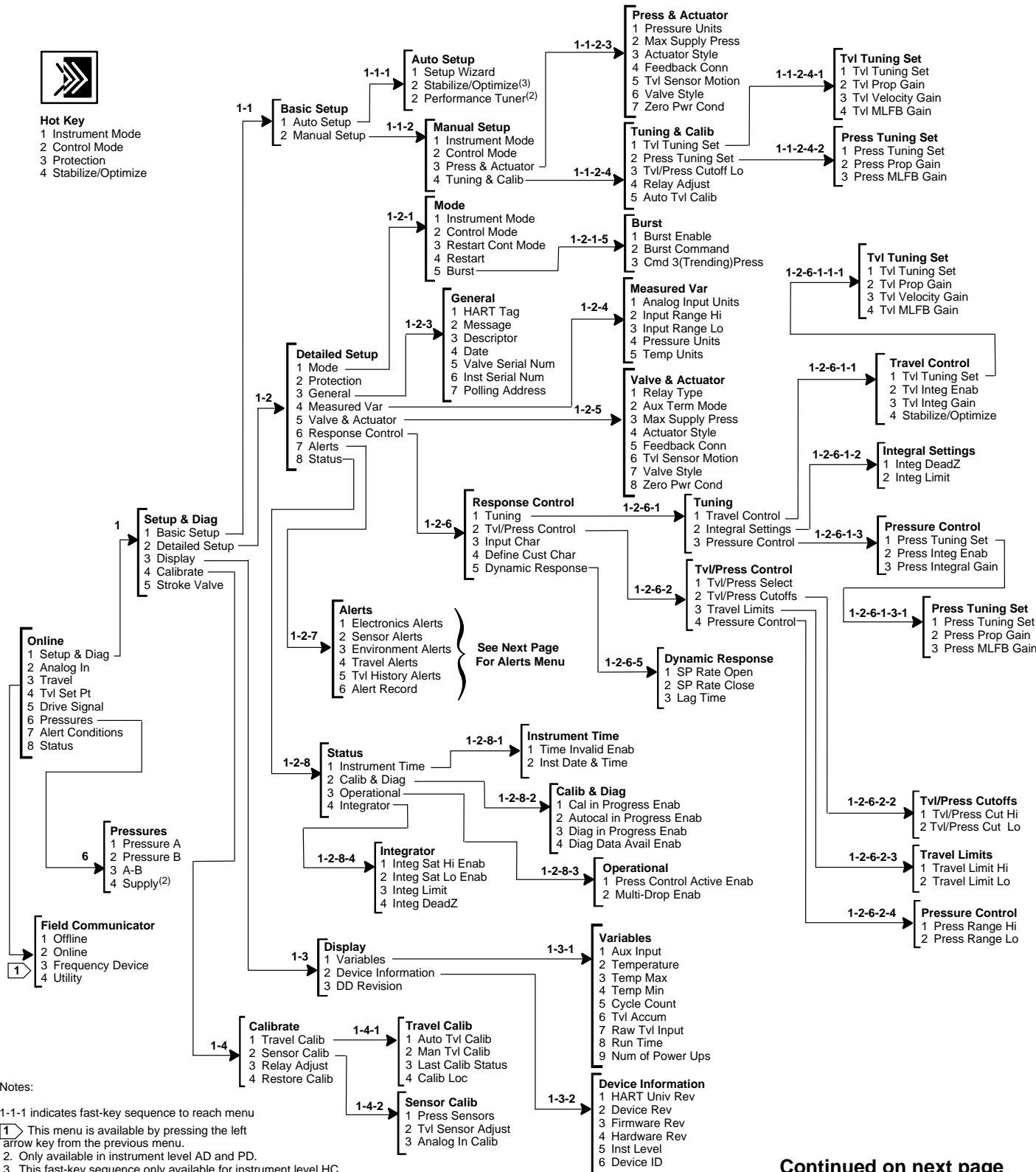
**Italicized Fast Key Sequence and Coordinates Indicates Variable/Function is found in the Alerts menu tree on page 5.**

1. Coordinates are to help locate the item on the menu tree on pages 4 and 5.
2. Only available in instrument level AD and PD.
3. This fast-key sequence only available for instrument level HC in the Basic Setup menu tree.

FIELDVUE® DVC6000 Instrument Level HC, AD, and PD



**Hot Key**  
 1 Instrument Mode  
 2 Control Mode  
 3 Protection  
 4 Stabilize/Optimize



**Notes:**  
 1-1-1 indicates fast-key sequence to reach menu  
 1 This menu is available by pressing the left arrow key from the previous menu.  
 2. Only available in instrument level AD and PD.  
 3. This fast-key sequence only available for instrument level HC in the Basic Setup menu tree.

A  
—  
B  
—  
C  
—  
D  
—  
E  
—  
F  
—  
G  
—  
H  
—  
I

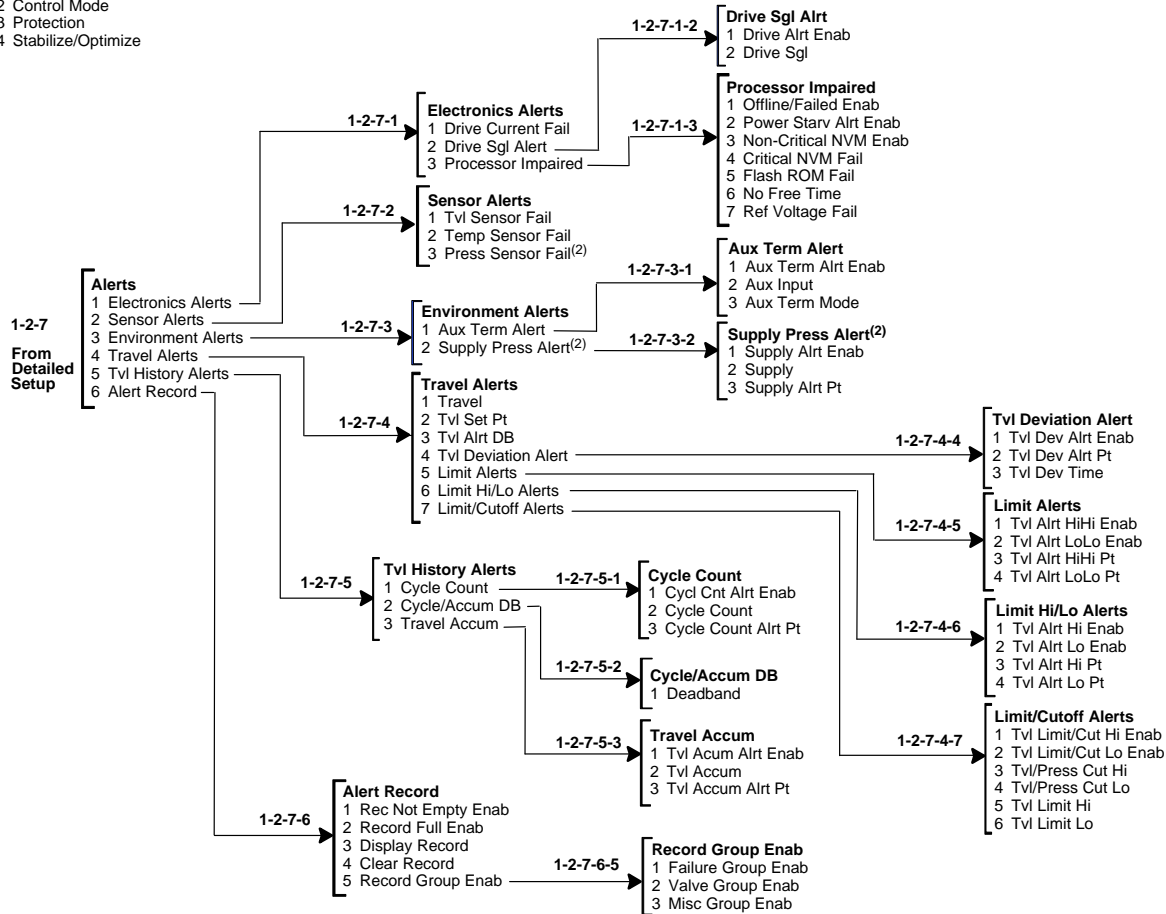
Continued on next page

**FIELDVUE® DVC6000 Instrument Level HC, AD, and PD  
(continued)**



**Hot Key**

- 1 Instrument Mode
- 2 Control Mode
- 3 Protection
- 4 Stabilize/Optimize



2. Only available in instrument level AD and PD.

# FIELDVUE® Digital Valve Controllers

February 2009

*Fast-Key Sequence for FIELDVUE® DVC6000 Instrument Level AC*

Function/Variable	Fast-Key Sequence	Coordinates <sup>(1)</sup>	Function/Variable	Fast-Key Sequence	Coordinates <sup>(1)</sup>
Actuator Style	1-1-2-2-4	5-C	Pressure Proportional Gain	1-1-2-3-2-2	6-D
Analog Input Calibration	1-3-1	3-F		1-2-3-4-1-2	6-G
Analog Input Range Hi	1-2-2-2	4-E	Pressure Range Hi	1-2-3-5-1	5-G
Analog Input Range Lo	1-2-2-3	4-E	Pressure Range Lo	1-2-3-5-2	5-G
Analog Input Units	1-2-2-1	4-E	Pressure Tuning Set	1-1-2-3-2-1	6-D
Auto Travel Calibration	1-1-2-3-4	5-D		1-2-3-4-1-1	6-G
	1-3-2	3-F	Pressure Units	1-1-2-2-2	5-C
	1-1-1-3	4-B		1-2-2-4	4-E
Calibration Location	1-3-5	3-F	Protection	Hot Key-2	1-B
Date	1-2-1-4	4-D	Relay Adjust	1-1-1-2	4-B
Descriptor	1-2-1-3	4-D		1-1-2-3-3	5-D
Device Description Revision	2-2	2-F		1-3-6	3-G
Device Identification	2-1-6	3-G	Relay Type	1-2-4	3-D
Device Revision	2-1-2	3-G	Restore Calibration	1-3-4	3-F
Feedback Connection	1-1-2-2-5	5-C	Setup Wizard	1-1-1-1	4-B
Firmware Revision	2-1-3	3-G	Travel Integral Gain	1-2-3-2-3	5-E
Hardware Revision	2-1-4	3-G	Travel Integral Enable	1-2-3-2-2	5-E
HART Tag	1-2-1-1	4-D	Travel MLFB Gain	1-1-2-3-1-4	6-D
HART Universal Revision	2-1-1	3-G		1-2-3-2-1-4	6-E
Input Characteristic	1-2-3-6	4-F	Travel / Pressure Select	1-1-2-2-1	5-C
Instrument Level	2-1-5	3-G		1-2-3-1	4-E
Instrument Mode	Hot Key-1	1-B	Travel Proportional Gain	1-1-2-3-1-2	6-D
	1-1-2-1	4-C		1-2-3-2-1-2	6-E
Instrument Serial Number	1-2-1-6	4-D	Travel Sensor Adjust	1-3-7	3-G
Integral Dead Zone	1-2-3-3-1	5-F	Travel Sensor Motion	1-1-2-2-6	5-C
Integral Limit	1-2-3-3-2	5-F	Travel Tuning Set	1-1-2-3-1-1	6-D
Manual Travel Calibration	1-3-3	3-F		1-2-3-2-1-1	6-E
Maximum Supply Pressure	1-1-2-2-3	5-C	Travel Velocity Gain	1-1-2-3-1-3	6-D
Message	1-2-1-2	4-D		1-2-3-2-1-3	6-E
Polling Address	1-2-1-7	4-E	Valve Serial Number	1-2-1-5	4-D
Pressure Integral Control Enable	1-2-3-4-2	5-F	Valve Style	1-1-2-2-7	5-C
Pressure Integral Gain	1-2-3-4-3	5-F	Zero Power Condition	1-1-2-2-8	5-C
Pressure MLFB Gain	1-1-2-3-2-3	6-D			
	1-2-3-4-1-3	6-G			

1. Coordinates are to help locate the item on the menu tree on the facing page.

FIELDVUE® DVC6000 Instrument Level AC

A

B

C

D

E

F

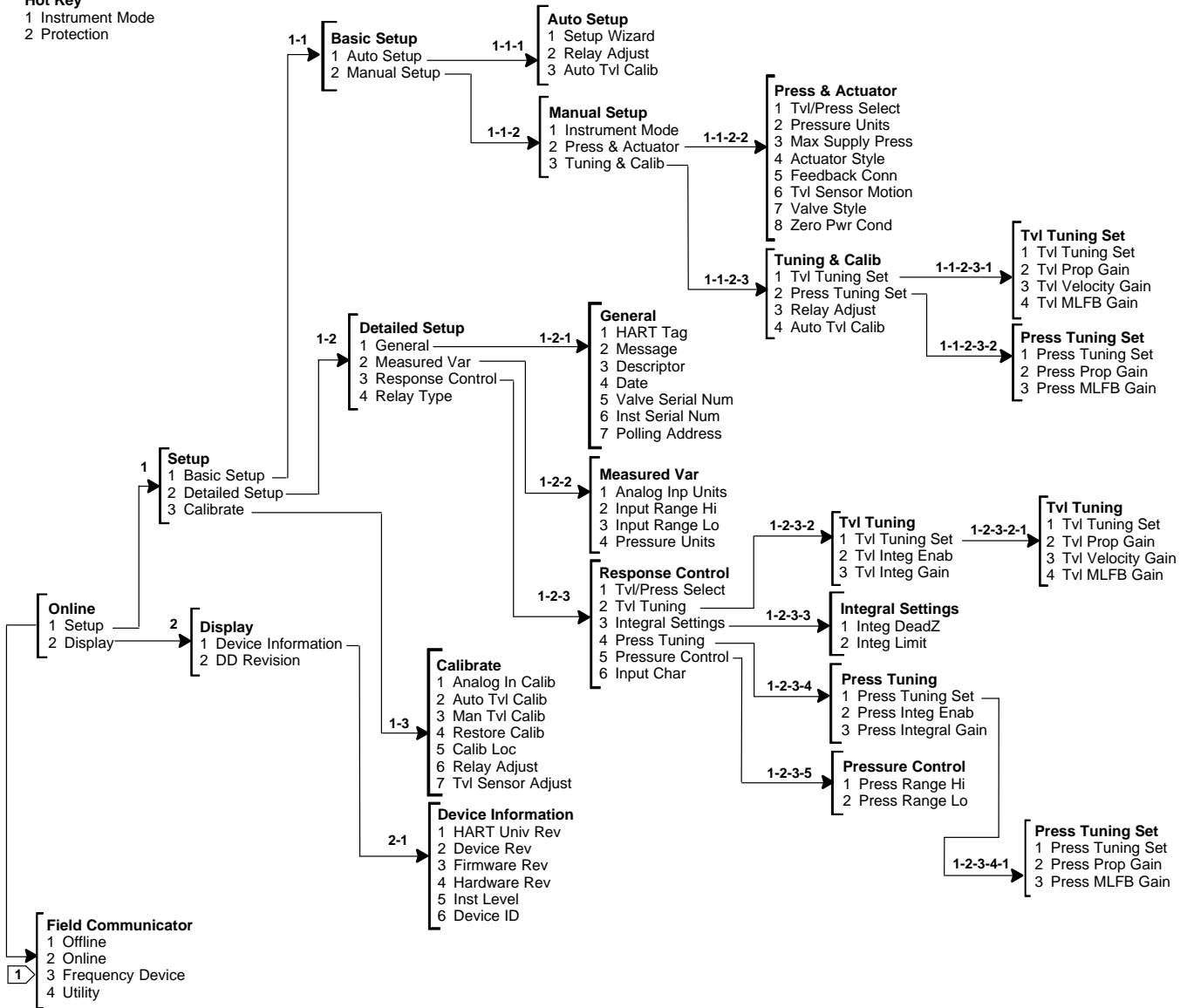
G

H

I



**Hot Key**  
 1 Instrument Mode  
 2 Protection



Notes:

1-1-1 indicates fast-key sequence to reach menu

1 This menu is available by pressing the left arrow key from the previous menu.

Menu Tree for 375 Field Communicator  
 Device Description Revision 1

1

2

3

4

5

6

FIELDVUE® Digital Valve Controllers

February 2009

Fast-Key Sequence for FIELDVUE® DVC6000 Instrument Level ODV

Function/Variable	Fast-Key Sequence	Coordinates(1)	Function/Variable	Fast-Key Sequence	Coordinates(1)
Actuator Style	2-2-5-4	4-C	HART Universal Revision	2-3-2-1	4-G
Alert Conditions	8	1-F	Input Characteristic	2-2-6-3	4-D
Analog Input	3	1-E	Instrument Date & Time	2-2-8-1-2	5-F
Analog Input Calibration	2-4-3	3-G	Instrument Level	2-3-2-5	4-G
Analog Input Range High	2-2-4-2	3-C	Instrument Mode	Hot-Key-1	1-B
Analog Input Range Low	2-2-4-3	3-C		2-2-1-1	3-A
Analog Input Units	2-2-4-1	3-C	Instrument Serial Number	2-2-3-6	3-C
Auto Calibration in Progress Enable	2-2-8-2-2	5-F	Integral Dead Zone	2-2-6-1-2-1	6-B
Auto Travel Calibration	2-4-1-1	4-G		2-2-8-4-4	5-G
Auxiliary Input	2-3-1-1	4-F	Integral Limit	2-2-6-1-2-2	6-B
	2-2-7-3-1-2	4-D		2-2-8-4-3	5-G
Auxiliary Terminal Alert Enable	2-2-7-3-1-1	4-C	Integrator Saturated Hi Enable	2-2-8-4-1	5-G
Auxiliary Terminal Mode	2-2-5-2	4-B	Integrator Saturated Lo Enable	2-2-8-4-2	5-G
	2-2-7-3-1-3	4-D	Last Calibration Status	2-4-1-3	4-H
			Lead/Lag	2-2-6-5-3	5-D
Burst Command	2-2-1-5-2	4-B	Manual Travel Calibration	2-4-1-2	4-H
Burst Enable	2-2-1-5-1	4-B	Maximum Supply Pressure	2-2-5-3	4-C
Calibration in Progress Enable	2-2-8-2-1	5-F	Message	2-2-3-2	3-B
Calibration Location	2-4-1-4	4-H	Miscellaneous Group Enable	2-2-7-7-5-3	4-G
Clear Record	2-2-7-7-4	3-G	Multi-Drop Enable	2-2-8-3-2	5-G
Command 3 (Trending) Press	2-2-1-5-3	4-B	No Free Time	2-2-7-1-3-6	4-C
Control Mode	Hot-Key 2	1-B	Non-Critical NVM Enable	2-2-7-1-3-3	4-C
	2-2-1-2	3-B	Number of Power Ups	2-3-1-9	4-G
Critical NVM Fail	2-2-7-1-3-4	4-C	Offline/Failed Enable	2-2-7-1-3-1	4-C
Cycle Counter	2-3-1-5	4-F	Partial Stroke Test	1	1-F
	2-2-7-5-1-2	4-E	Partial Stroke Test Enable	2-2-9-1	3-E
Cycle Counter Alert Enable	2-2-7-5-1-1	4-E	Partial Stroke Test Start Point	2-2-6-2-5-2	6-D
Cycle Counter Alert Point	2-2-7-5-1-3	4-E	Partial Stroke Test Variables	2-2-9-2	3-E
Cycle Counter Deadband	2-2-7-5-2-1	4-F	Performance Tuner	2-1-2	2-C
Date	2-2-3-4	3-B		2-2-6-1-1-5	5-B
Descriptor	2-2-3-3	3-B	Polling Address	2-2-3-7	3-C
Define Custom Characteristic	2-2-6-4	4-D	Power Starvation Alert Enable	2-2-7-1-3-2	4-C
Device Description Revision, HART Communicator	2-3-3	3-F	Pressure Control Active Enable	2-2-8-3-1	5-F
Device Identification	2-3-2-6	4-G	Pressure Deviation Alert Enable	2-2-7-6-2	3-F
Device Revision	2-3-2-2	4-G	Pressure Deviation Alert Point	2-2-7-6-3	3-F
Diagnostic Data Available Enable	2-2-8-2-4	5-F	Pressure Deviaton Time	2-2-7-6-4	3-F
Diagnostic In Progress Enable	2-2-8-2-3	5-F	Pressure Integral Enable	2-2-6-1-3-2	6-B
Display Record	2-2-7-7-3	3-F	Pressure Integral Gain	2-2-6-1-3-3	6-B
Drive Alert Enable	2-2-7-1-2-1	4-B	Pressure MLFB Gain	2-2-6-1-3-1-3	6-C
Drive Current Fail	2-2-7-1-1	3-C	Pressure A	7-1	2-F
Drive Signal	6	1-F		Pressure, A - B	7-3
	2-2-7-1-2-2	4-B	Pressure B	7-2	2-F
End Point Control Enable	2-2-6-2-2-1	6-D	Pressure Proportional Gain	2-2-6-1-3-1-2	6-C
Failure Group Enable	2-2-7-7-5-1	4-G	Pressure Sat Time	2-2-6-2-5-4	6-E
Feedback Connection	2-2-5-5	4-C	Pressure Sensors Calibration	2-4-2-3	4-H
Firmware Revision	2-3-2-3	4-G	Pressure Sensor Fail	2-2-7-2-3	3-C
Flash ROM Fail	2-2-7-1-3-5	4-C	Pressure Set Point	2-2-6-2-5-3	6-E
Hardware Revision	2-3-2-4	4-G	Pressure Tuning Set	2-2-6-1-3-1-1	6-C
HART Tag	2-2-3-1	3-B			

**Italicized Fast-Key Sequence and Coordinates indicates Variable/Function is found in the Alerts menu tree on page 11.**  
 2. Coordinates are to help locate the item on the menu trees on page 10 and 11.

continued on next page

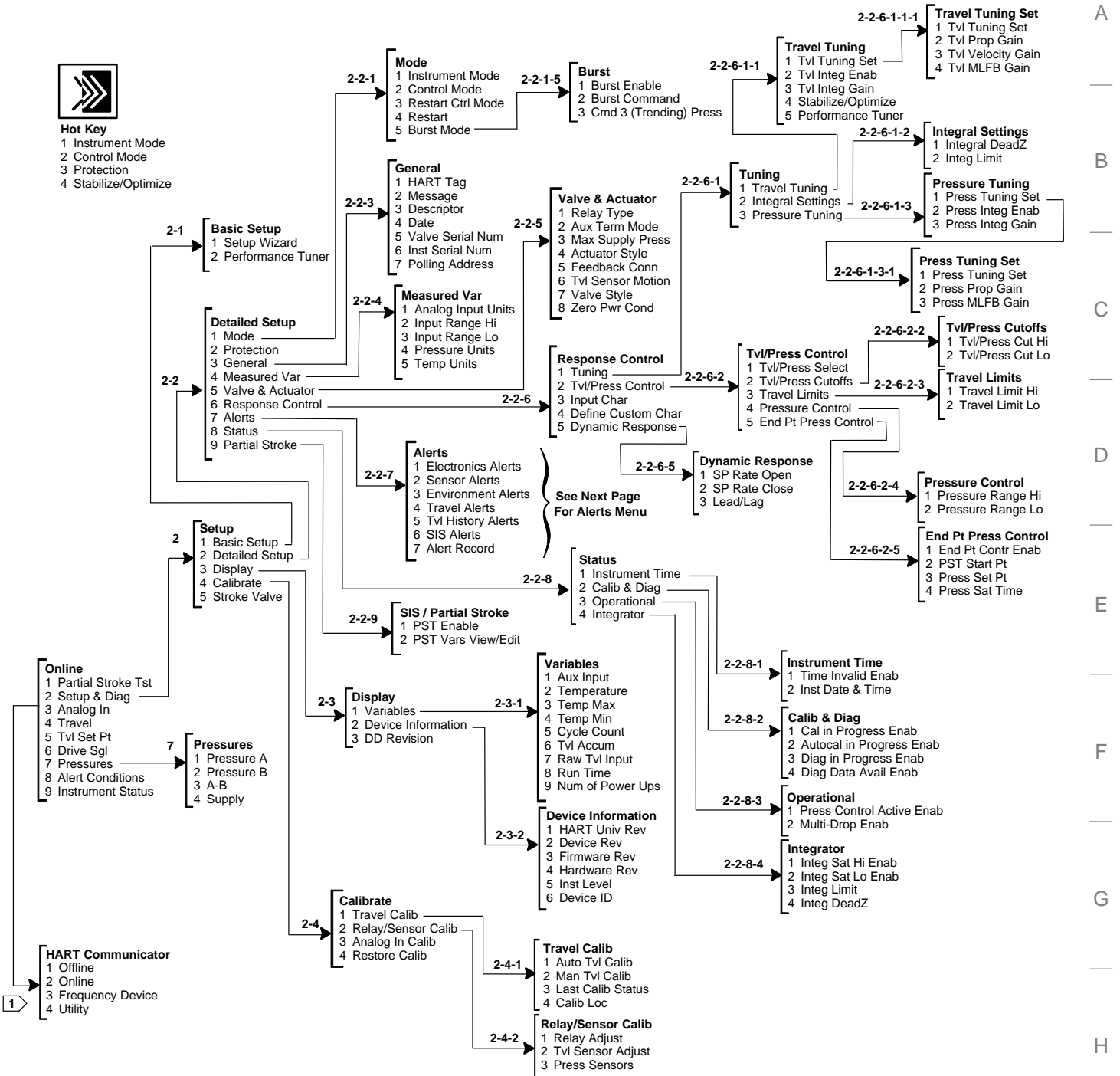
Fast-Key Sequence for FIELDVUE® DVC6000 Instrument Level ODV (continued)

Function/Variable	Fast-Key Sequence	Coordinates(1)	Function/Variable	Fast-Key Sequence	Coordinates(1)
Pressure Units	2-2-4-4	3-C	Travel Alert Hi Enable	2-2-7-4-6-1	5-E
Protection	Hot Key-3	1-B	Travel Alert Lo Enable	2-2-7-4-6-2	5-E
	2-2-2	2-C	Travel Alert High Point	2-2-7-4-6-3	5-E
Raw Travel Input	2-3-1-7	4-F	Travel Alert Lo Point	2-2-7-4-6-4	5-F
Record Full Enable	2-2-7-7-2	3-F	Travel Alert HiHi Enable	2-2-7-4-5-1	5-E
Record Not Empty Enable	2-2-7-7-1	3-F	Travel Alert LoLo Enable	2-2-7-4-5-2	5-E
Relay Adjust	2-4-2-1	4-H	Travel Alert HiHi Point	2-2-7-4-5-3	5-E
Relay Type	2-2-5-1	4-B	Travel Alert Low Low Point	2-2-7-4-5-4	5-E
Reference Voltage Fail	2-2-7-1-3-7	4-C	Travel Deviation Alert Enable	2-2-7-4-4-1	5-D
Restart	2-2-1-4	3-B	Travel Deviation Alert Point	2-2-7-4-4-2	5-D
Restart Control Mode	2-2-1-3	3-B	Travel Deviation Time	2-2-7-4-4-3	5-D
Restore Calibration	2-4-4	3-G	Travel Integral Enable	2-2-6-1-1-2	5-A
Run Time	2-3-1-8	4-F	Travel Integral Gain	2-2-6-1-1-3	5-B
Setpoint Rate Close	2-2-6-5-2	5-D	Travel Limit/Cutoff Hi Enable	2-2-7-4-7-1	5-F
Setpoint Rate Open	2-2-6-5-1	5-D	Travel Limit/Cutoff Lo Enable	2-2-7-4-7-2	5-F
Setup Wizard	2-1-1	2-C	Travel Limit High	2-2-6-2-3-1	6-D
Stabilize/Optimize	Hot Key-4	1-B		2-2-7-4-7-5	5-F
	2-2-6-1-1-4	5-B	Travel Limit Low	2-2-6-2-3-2	6-D
Status, Instrument	9	1-G		2-2-7-4-7-6	5-F
Stroke Valve	2-5	2-E	Travel MLFB Gain	2-2-6-1-1-1-4	6-A
Supply Pressure	2-2-7-3-2-2	4-D	Travel/Pressure Cutoff High	2-2-6-2-2-1	6-C
Supply Alert Enable	2-2-7-3-2-1	4-D		2-2-7-4-7-3	5-F
Supply Alert Point	2-2-7-3-2-3	4-D	Travel Pressure/Cutoff Low	2-2-6-2-2-2	6-D
Supply Pressure	7-4	2-G		2-2-7-4-7-4	5-F
Temperature	2-3-1-2	4-F	Travel/Pressure Select	2-2-6-2-1	5-C
Temperature, Maximum Recorded	2-3-1-3	4-F	Travel Proportional Gain	2-2-6-1-1-1-2	6-A
Temperature, Minimum Recorded	2-3-1-4	4-F	Travel Sensor Adjust	2-4-2-2	4-H
Temperature Sensor Fail	2-2-7-2-2	3-C	Travel Sensor Fail	2-2-7-2-1	3-C
Temperature Units	2-2-4-5	3-C	Travel Sensor Motion	2-2-5-6	4-C
Time Invalid Enable	2-2-8-1-1	4-F	Travel Set Point	5	1-F
Travel	4	1-F		2-2-7-4-2	3-D
	2-2-7-4-1	3-D	Travel Tuning Set	2-2-6-1-1-1-1	6-A
Travel Accumulator	2-3-1-6	4-F	Travel Velocity Gain	2-2-6-1-1-1-3	6-A
	2-2-7-5-3-2	4-F	Valve Group Enable	2-2-7-7-5-2	4-G
Travel Accumulator Alert Enable	2-2-7-5-3-1	4-F	Valve Serial Number	2-2-3-5	3-C
Travel Accumulator Alert Point	2-2-7-5-3-3	4-F	Valve Style	2-2-5-7	4-C
Travel Accumulator Deadband	2-2-7-5-2-1	4-F	Zero Power Condition	2-2-5-8	4-C
Travel Alert Deadband	2-2-7-4-3	3-D			

**Italicized Fast Key Sequence and Coordinates Indicates Variable/Function is found in the Alerts menu tree on page 11.**

1. Coordinates are to help locate the item on the menu trees on page 10 and 11.

FIELDVUE® DVC6000 Instrument Level ODV



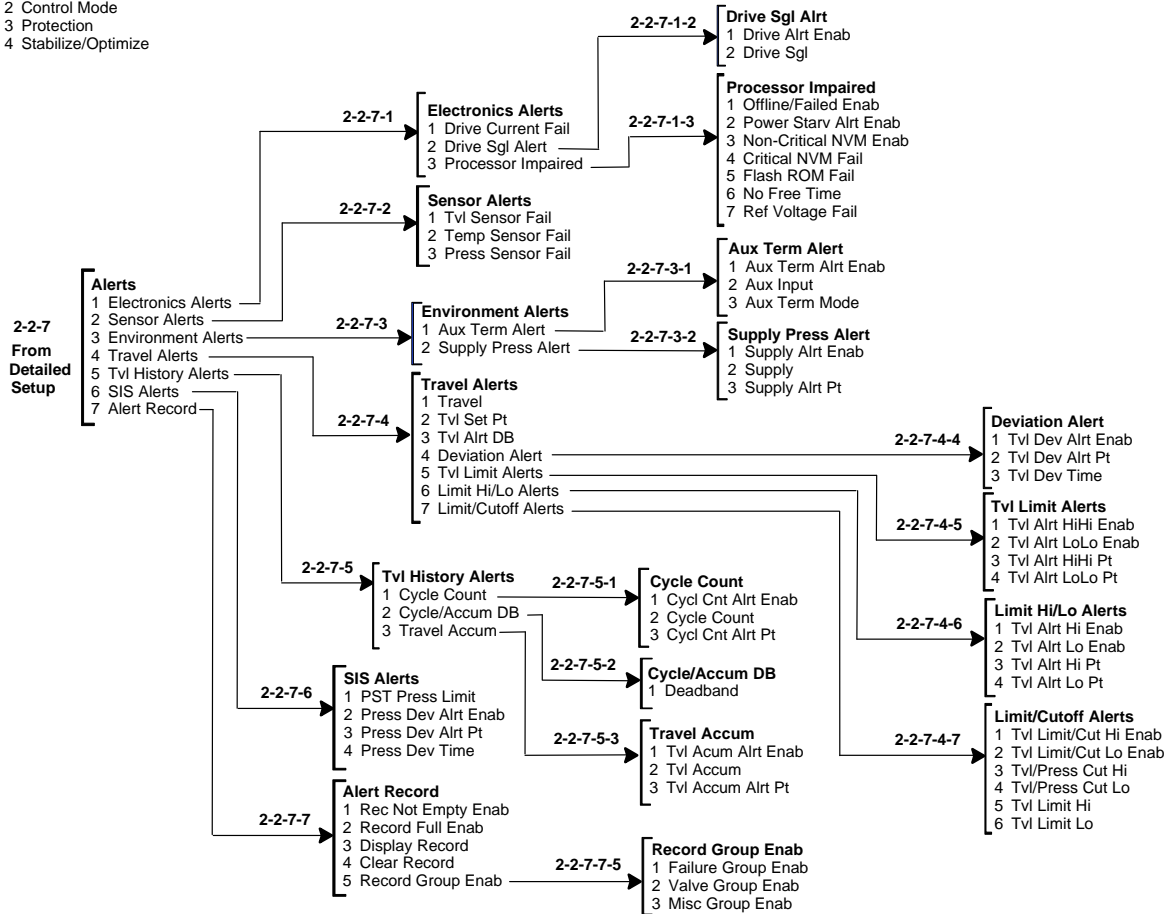
Notes:  
 3-3-1 indicates fast-key sequence to reach menu.  
 1 This menu is available by pressing the left arrow key from the previous menu.

Continued on next page

**FIELDVUE® DVC6000 Instrument Level ODV  
(continued)**



- Hot Key**  
 1 Instrument Mode  
 2 Control Mode  
 3 Protection  
 4 Stabilize/Optimize



Menu Tree for 275 HART Communicator  
 Device Description Revision 1

FIELDVUE® Digital Valve Controllers

February 2009

Fast-Key Sequence for FIELDVUE® DVC6000 SIS Digital Valve Controller

Function/Variable	Fast-Key Sequence	Coordinates(1)	Function/Variable	Fast-Key Sequence	Coordinates(1)
Actuator Style	2-2-5-4	4-C	HART Tag	2-2-3-1	3-B
Alert Conditions	8	1-F	HART Universal Revision	2-3-2-1	4-G
Analog Input	3	1-E	Input Characteristic	2-2-6-3	4-D
Analog Input Calibration	2-4-3	3-G	Instrument Date & Time	2-2-8-1-2	5-F
Analog Input Range High	2-2-4-2	3-C	Instrument Level	2-3-2-5	4-G
Analog Input Range Low	2-2-4-3	3-C	Instrument Mode	Hot-Key-1	1-B
Analog Input Units	2-2-4-1	3-C		2-2-1-1	3-A
Auto Calibration in Progress Enable	2-2-8-2-2	5-F	Instrument Serial Number	2-2-3-6	3-C
Auto Test Interval	2-2-9-3	3-E	Integral Dead Zone	2-2-6-1-2-1	6-B
Auto Travel Calibration	2-4-1-1	4-G		2-2-8-4-4	5-G
Auxiliary Input	2-3-1-1	4-F	Integral Limit	2-2-6-1-2-2	6-B
	2-2-7-3-1-2	4-C		2-2-8-4-3	5-G
Auxiliary Terminal Alert Enable	2-2-7-3-1-1	4-C	Integrator Saturated Hi Enable	2-2-8-4-1	5-G
Auxiliary Terminal Mode	2-2-5-2	4-B	Integrator Saturated Lo Enable	2-2-8-4-2	5-G
	2-2-7-3-1-3	4-D	Lag Time	2-2-6-5-3	5-E
Burst Command	2-2-1-5-2	4-B	Last Calibration Status	2-4-1-3	4-H
Burst Enable	2-2-1-5-1	4-A	Manual Travel Calibration	2-4-1-2	4-G
Calibration in Progress Enable	2-2-8-2-1	5-F	Maximum Supply Pressure	2-2-5-3	4-C
Calibration Location	2-4-1-4	4-H	Message	2-2-3-2	3-B
Clear Record	2-2-7-7-4	3-F	Miscellaneous Group Enable	2-2-7-7-5-3	4-G
Command 3 (Trending) Press	2-2-1-5-3	4-B	Multi-Drop Enable	2-2-8-3-2	5-F
Control Mode	Hot-Key 2	1-B	No Free Time	2-2-7-1-3-6	4-C
	2-2-1-2	3-B	Non-Critical NVM Enable	2-2-7-1-3-3	4-C
Critical NVM Fail	2-2-7-1-3-4	4-C	Number of Power Ups	2-3-1-9	4-F
Cycle Counter	2-3-1-5	4-F	Offline/Failed Enable	2-2-7-1-3-1	4-C
	2-2-7-5-1-2	4-E	Partial Stroke Test	1	1-F
Cycle Counter Alert Enable	2-2-7-5-1-1	4-E	Partial Stroke Test Enable	2-2-9-1	3-E
Cycle Counter Alert Point	2-2-7-5-1-3	4-E	Partial Stroke Test Start Point	2-2-6-2-2-2	6-D
Cycle Counter Deadband	2-2-7-5-2-1	4-F	Partial Stroke Test Variables	2-2-9-2	3-E
Date	2-2-3-4	3-B	Performance Tuner	2-1-2	2-C
Descriptor	2-2-3-3	3-B		2-2-6-1-1-5	5-B
Define Custom Characteristic	2-2-6-4	4-D	Polling Address	2-2-3-7	3-C
Device Description Revision, HART Communicator	2-3-3	3-F	Power Starvation Alert Enable	2-2-7-1-3-2	4-C
Device Identification	2-3-2-6	4-G	Pressure Control Active Enable	2-2-8-3-1	5-F
Device Revision	2-3-2-2	4-G	Pressure Deviation Alert Enable	2-2-7-6-2	3-F
Diagnostic Data Available Enable	2-2-8-2-4	5-F	Pressure Deviation Alert Point	2-2-7-6-3	3-F
Diagnostic In Progress Enable	2-2-8-2-3	5-F	Pressure Deviation Time	2-2-7-6-4	3-F
Display Record	2-2-7-7-3	3-F	Pressure Integral Enable	2-2-6-1-3-2	6-B
Drive Alert Enable	2-2-7-1-2-1	4-B	Pressure Integral Gain	2-2-6-1-3-3	6-B
Drive Current Fail	2-2-7-1-1	3-C	Pressure MLFB Gain	2-2-6-1-3-1-3	5-C
Drive Signal	6	1-F	Pressure A	7-1	2-F
	2-2-7-1-2-2	4-B	Pressure, A - B	7-3	2-F
DVC Power Up	2-2-9-4	3-E	Pressure B	7-2	2-F
End Point Control Enable	2-2-6-2-2-1	6-D	Pressure Proportional Gain	2-2-6-1-3-1-2	5-C
Failure Group Enable	2-2-7-7-5-1	4-F	Pressure Sat Time	2-2-6-2-2-4	6-D
Feedback Connection	2-2-5-5	4-C	Pressure Sensors Calibration	2-4-2-3	4-H
Firmware Revision	2-3-2-3	4-G	Pressure Sensor Fail	2-2-7-2-3	3-C
Flash ROM Fail	2-2-7-1-3-5	4-C	Pressure Set Point	2-2-6-2-2-3	6-D
Hardware Revision	2-3-2-4	4-G	Pressure Tuning Set	2-2-6-1-3-1-1	5-C

**Italicized Fast-Key Sequence and Coordinates indicates Variable/Function is found in the Alerts menu tree on page 15.**  
 1. Coordinates are to help locate the item on the menu tree on pages NO TAG and 15.

continued on next page

Fast-Key Sequence for FIELDVUE® DVC6000 SIS Digital Valve Controller (Continued)

Function/Variable	Fast-Key Sequence	Coordinates(1)	Function/Variable	Fast-Key Sequence	Coordinates(1)
Pressure Units	2-2-4-4	3-C	Travel Accumulator Deadband	2-2-7-5-2-1	4-F
Protection	Hot Key-3	1-B	Travel Alert Deadband	2-2-7-4-3	3-D
	2-2-2	2-C	Travel Alert Hi Enable	2-2-7-4-6-1	5-E
Raw Travel Input	2-3-1-7	4-F	Travel Alert Lo Enable	2-2-7-4-6-2	5-E
Record Full Enable	2-2-7-7-2	3-F	Travel Alert High Point	2-2-7-4-6-3	5-E
Record Not Empty Enable	2-2-7-7-1	3-F	Travel Alert Lo Point	2-2-7-4-6-4	5-F
Relay Adjust	2-4-2-1	4-H	Travel Alert HiHi Enable	2-2-7-4-5-1	5-E
Relay Type	2-2-5-1	4-B	Travel Alert LoLo Enable	2-2-7-4-5-2	5-E
Reference Voltage Fail	2-2-7-1-3-7	4-C	Travel Alert HiHi Point	2-2-7-4-5-3	5-E
Restart	2-2-1-4	3-B	Travel Alert Low Low Point	2-2-7-4-5-4	5-E
Restart Control Mode	2-2-1-3	3-B	Travel Deviation Alert Enable	2-2-7-4-4-1	5-D
Restore Calibration	2-4-4	3-G	Travel Deviation Alert Point	2-2-7-4-4-2	5-D
Run Time	2-3-1-8	4-F	Travel Deviation Time	2-2-7-4-4-3	5-D
Setpoint Rate Close	2-2-6-5-2	5-D	Travel Integral Enable	2-2-6-1-1-2	5-A
Setpoint Rate Open	2-2-6-5-1	5-D	Travel Integral Gain	2-2-6-1-1-3	5-A
Setup Wizard	2-1-1	2-C	Travel Limit/Cutoff Hi Enable	2-2-7-4-7-1	5-F
SIS Calibration	2-4-5	3-H	Travel Limit/Cutoff Lo Enable	2-2-7-4-7-2	5-F
Stabilize/Optimize	Hot Key-4	1-B	Travel Limit High	2-2-7-4-7-5	5-F
	1-2-6-1-1-4	5-B	Travel Limit Low	2-2-7-4-7-6	5-F
Status, Instrument	9	1-G	Travel MLFB Gain	2-2-6-1-1-1-4	6-A
Stroke Valve	2-5	2-E	Travel/Pressure Cutoff High	2-2-6-2-1-1	6-C
Supply Pressure	2-2-7-3-2-2	4-D		2-2-7-4-7-3	5-F
Supply Alert Enable	2-2-7-3-2-1	4-D	Travel Pressure/Cutoff Low	2-2-6-2-1-2	6-D
Supply Alert Point	2-2-7-3-2-3	4-D		2-2-7-4-7-4	5-F
Supply Pressure	7-4	2-F	Travel Proportional Gain	2-2-6-1-1-1-2	6-A
Temperature	2-3-1-2	4-F	Travel Sensor Adjust	2-4-2-2	4-H
Temperature, Maximum Recorded	2-3-1-3	4-F	Travel Sensor Fail	2-2-7-2-1	3-C
Temperature, Minimum Recorded	2-3-1-4	4-F	Travel Sensor Motion	2-2-5-6	4-C
Temperature Sensor Fail	2-2-7-2-2	3-C	Travel Set Point	5	1-F
Temperature Units	2-2-4-5	3-C		2-2-7-4-2	3-D
Time Invalid Enable	2-2-8-1-1	5-F	Travel Tuning Set	2-2-6-1-1-1-1	6-A
Travel	4	1-F	Travel Velocity Gain	2-2-6-1-1-1-3	6-A
	2-2-7-4-1	3-D	Valve Group Enable	2-2-7-7-5-2	4-G
Travel Accumulator	2-3-1-6	4-F	Valve Serial Number	2-2-3-5	3-C
	2-2-7-5-3-2	4-F	Valve Style	2-2-5-7	4-C
Travel Accumulator Alert Enable	2-2-7-5-3-1	4-F	Zero Power Condition	2-2-5-8	4-C
Travel Accumulator Alert Point	2-2-7-5-3-3	4-F			

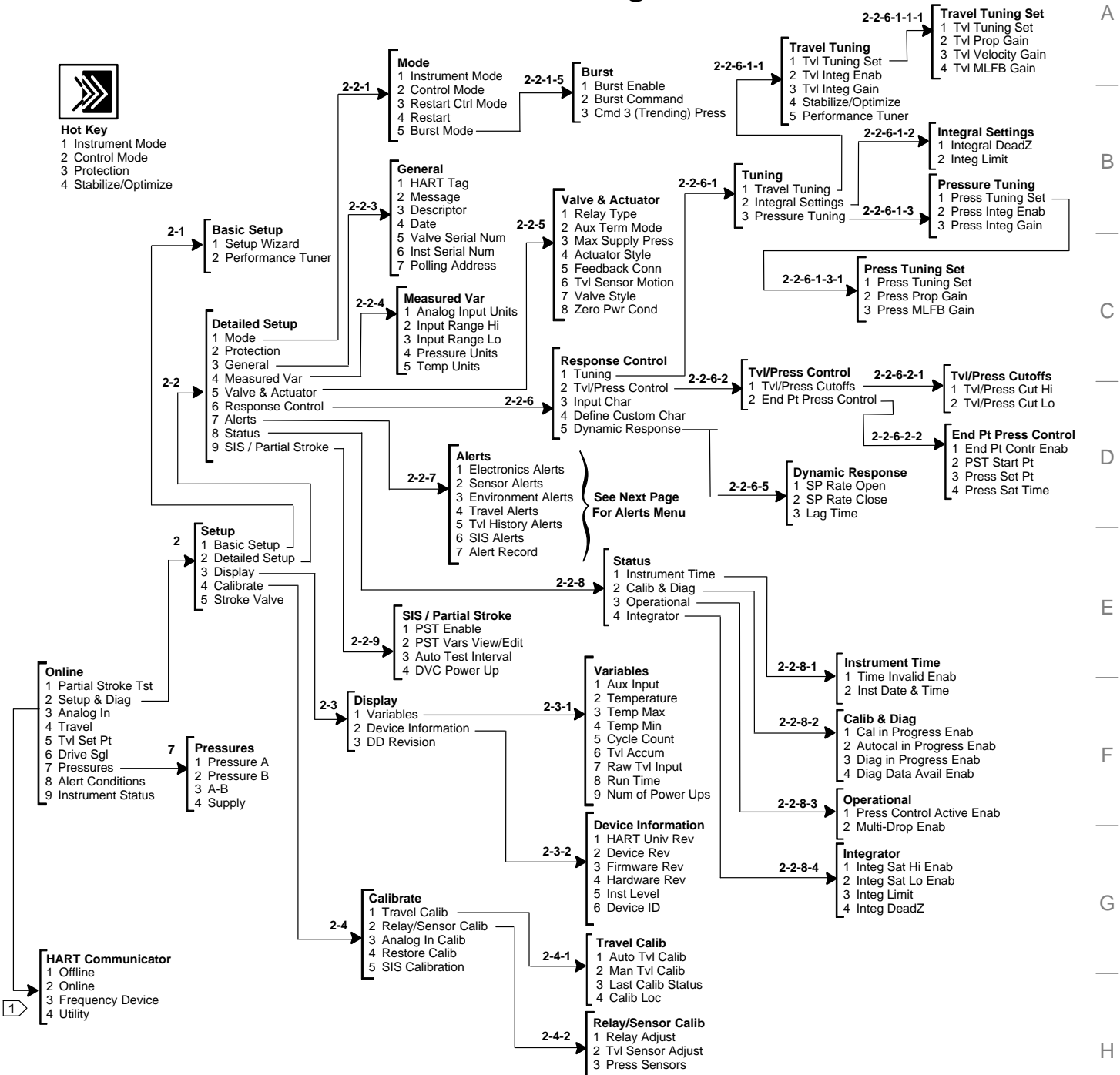
**Italicized Fast Key Sequence and Coordinates Indicates Variable/Function is found in the Alerts menu tree on page 15.**

1. Coordinates are to help locate the item on the menu tree on pages NO TAG and 15.

FIELDVUE® DVC6000 SIS Digital Valve Controller



**Hot Key**  
 1 Instrument Mode  
 2 Control Mode  
 3 Protection  
 4 Stabilize/Optimize



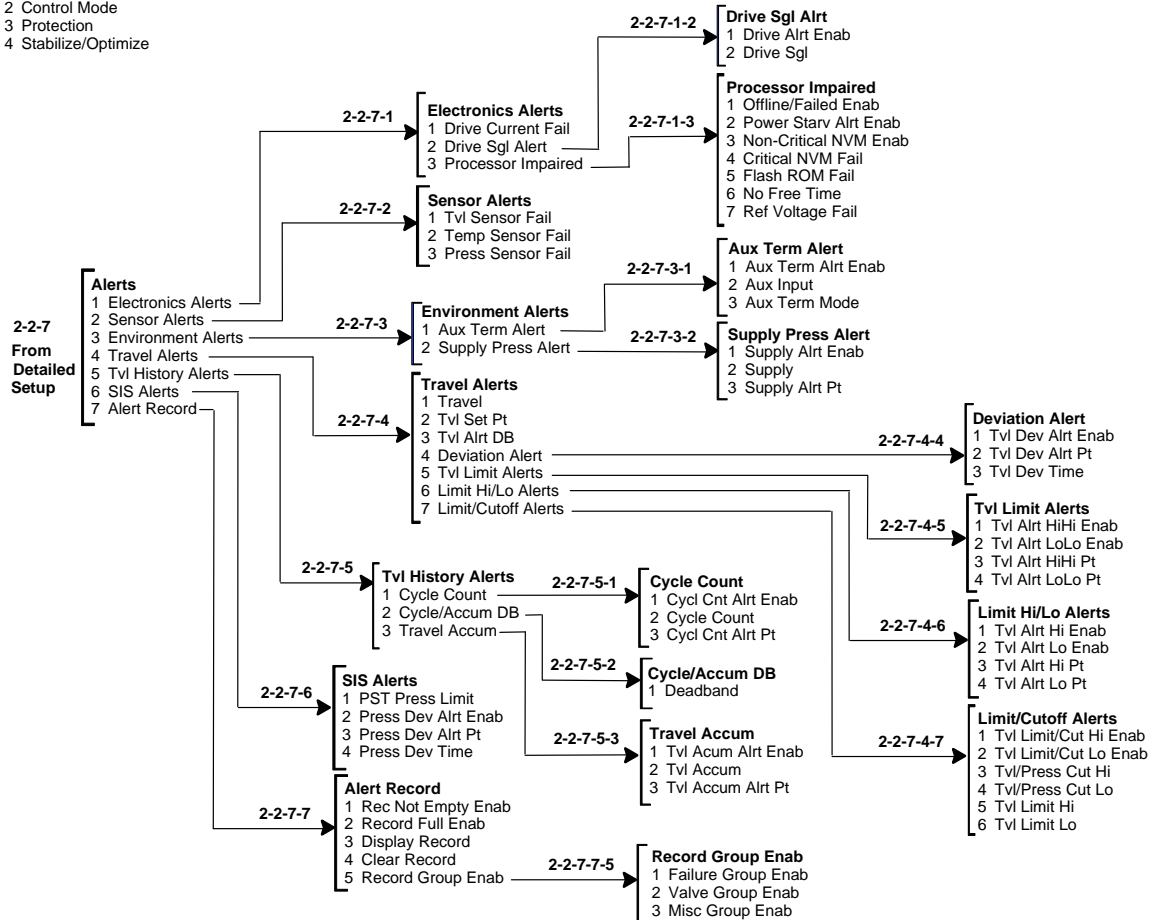
Notes:  
 3-3-1 indicates fast-key sequence to reach menu.  
 This menu is available by pressing the left arrow key from the previous menu.

Continued on next page

**FIELDVUE® DVC6000 SIS Digital Valve Controller  
(continued)**



- Hot Key**  
 1 Instrument Mode  
 2 Control Mode  
 3 Protection  
 4 Stabilize/Optimize



Menu Tree for 275 HART Communicator  
 Device Description Revision 1

Fisher and FIELDVUE are marks owned by one of the companies in the Emerson Process Management business division of Emerson Electric Co. Emerson Process Management, Emerson, and the Emerson logo are trademarks and service marks of Emerson Electric Co. HART is a mark owned by the HART Communication Foundation. All other marks are the property of their respective owners.

The contents of this publication are presented for informational purposes only, and while every effort has been made to ensure their accuracy, they are not to be construed as warranties or guarantees, express or implied, regarding the products or services described herein or their use or applicability. All sales are governed by our terms and conditions, which are available upon request. We reserve the right to modify or improve the designs or specifications of such products at any time without notice. Neither Emerson, Emerson Process Management, nor any of their affiliated entities assumes responsibility for the selection, use or maintenance of any product. Responsibility for proper selection, use, and maintenance of any product remains solely with the purchaser and end-user.

**Emerson Process Management**

Marshalltown, Iowa 50158 USA

Sorocaba, 18087 Brazil

Chatham, Kent ME4 4QZ UK

Dubai, United Arab Emirates

Singapore 128461 Singapore

[www.Fisher.com](http://www.Fisher.com)